

# Mini Evaluation Board : AEM10941



**e-peas**  
semiconductors

*Please follow the next steps when using the AEM10941 mini evaluation board*



- Step 1 :** MPP configuration (DS page 12)
- Step 2 :** System configuration (DS page 11)
- Step 3 :** LDO outputs configuration (DS page 9)
- Step 4 :** Cold-start configuration (DS page 12)
- Step 5 :** Balun for dual-cells supercapacitor (DS page 10)
- Step 6 :** Primary battery configuration (DS page 12)
- Step 7 :** Connect the storage element
- Step 8 :** Connect the primary battery
- Step 9 :** Connect the loads
- Step 10 :** Connect the source
- Step 11 :** Status

*For more information : [support@e-peas.com](mailto:support@e-peas.com)*

# Mini Evaluation Board : AEM10941



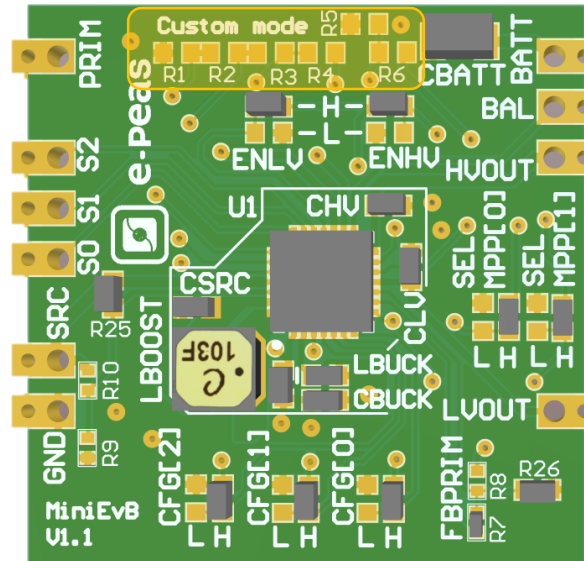
**e-peas**  
semiconductors

1.

SELMPP1-0	MPPT Ratio (%)
0-0	70
0-1	75
1-0	85
1-1	90

2.

CFG2-1-0	Storage element type
H-H-H	Li-ion battery
H-H-L	Solid state Battery
H-L-H	Li-ion / NiMH battery
H-L-L	Single cell supercapacitor
L-H-H	Dual cell supercapacitor
L-H-L	Dual cell supercapacitor
L-L-H	LifePo4
L-L-L	Custom mode



1. MPP configuration (DS page 12)

2. System configuration (DS page 11)

Please see DS page 11 « Custom mode » and use the R1 – R6 resistors

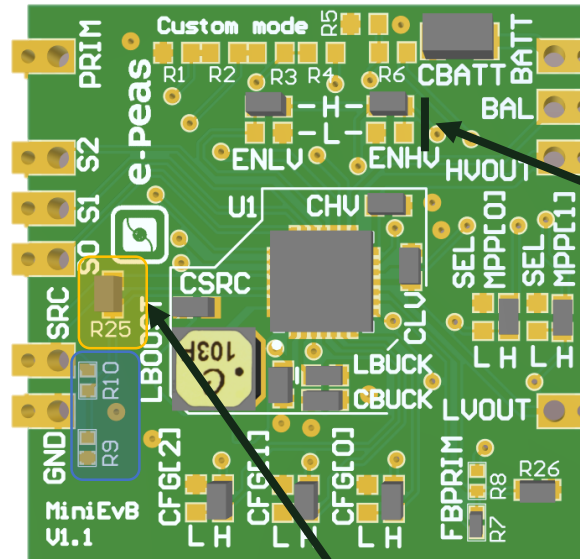
# Mini Evaluation Board : AEM10941



**e-peas**  
semiconductors

3.

ENLV	ENHV	LVOUT	HVOUT
1	1	Enabled	Enabled
1	0	Enabled	Disabled
0	1	Disabled	Enabled
0	0	Disabled	Disabled



3. LDO outputs configuration  
(DS page 9)

4.

Solder resistor « 0R R25 » if not used else :

$$100 \text{ k}\Omega \leq RC = R9 + R10 \leq 10 \text{ M}\Omega$$

CS = coldstart voltage (> 380mV)

$$R9 = \frac{0.38}{CS} * RC$$

$$R10 = RC - R9$$

4. Cold-start configuration (DS page 12)

For more information : [support@e-peas.com](mailto:support@e-peas.com)

# Mini Evaluation Board : AEM10941



**e-peas**  
semiconductors

5.

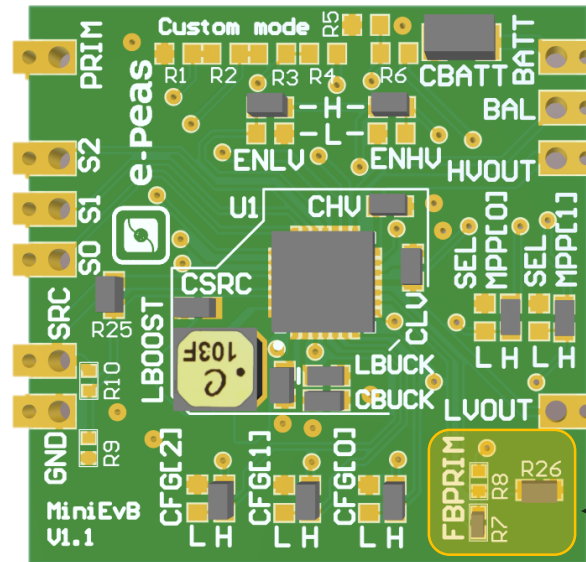
If dual-cell supercapacitor :  
BAL connected to the node  
between the supercapacitors

**BAL = ToCN**

If not :

**BAL = GND**

Do not leave floating PRIM or BAL



5. Balun for dual-cells  
supercapacitor  
(DS page 10)

6.

Solder resistor « 0R R26 » if no primary battery  
else

$$100 \text{ k}\Omega \leq R_P = R_7 + R_8 \leq 500 \text{ k}\Omega$$

$V_{PRIM\_MIN}$  = minimum voltage on PRIM

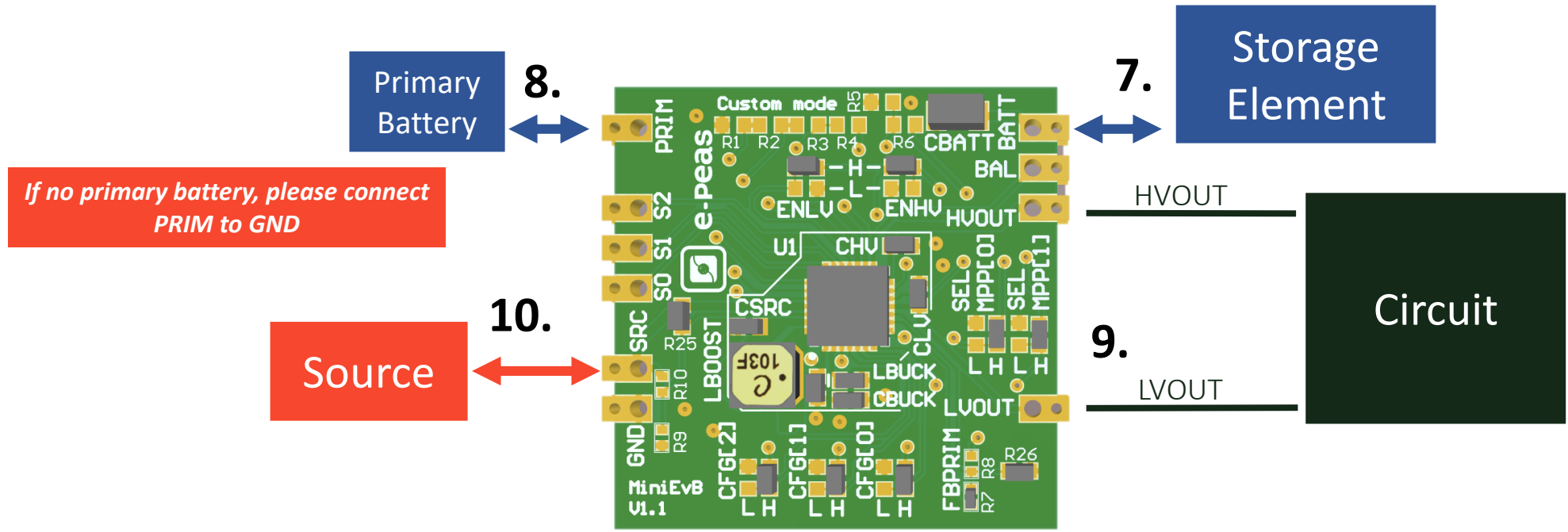
$$R_7 = \left( \frac{V_{PRIM\_MIN}}{4} * R_P \right) / 2.2 \text{ V}$$

$$R_8 = R_P - R_7$$

6. Primary battery configuration  
(DS page 12)

For more information : [support@e-peas.com](mailto:support@e-peas.com)

# Mini Evaluation Board : AEM10941



For more information : [support@e-peas.com](mailto:support@e-peas.com)





e-peas.com 代理商联系方式:

样品, 报价, 评估板, 参考设计, 技术支持

电话: 0755-82565851

邮件: [dwin100@dwintech.com](mailto:dwin100@dwintech.com)

手机: 156-2521-4151

网址: [www.dwintech.com/e-peas\\_SA.html](http://www.dwintech.com/e-peas_SA.html)

深圳市南频科技有限公司

D-Win Technology (HongKong) Co., Ltd